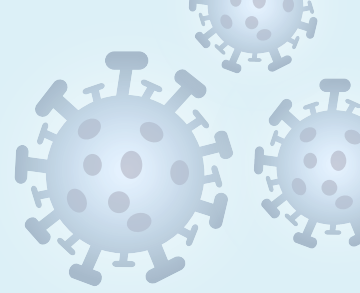
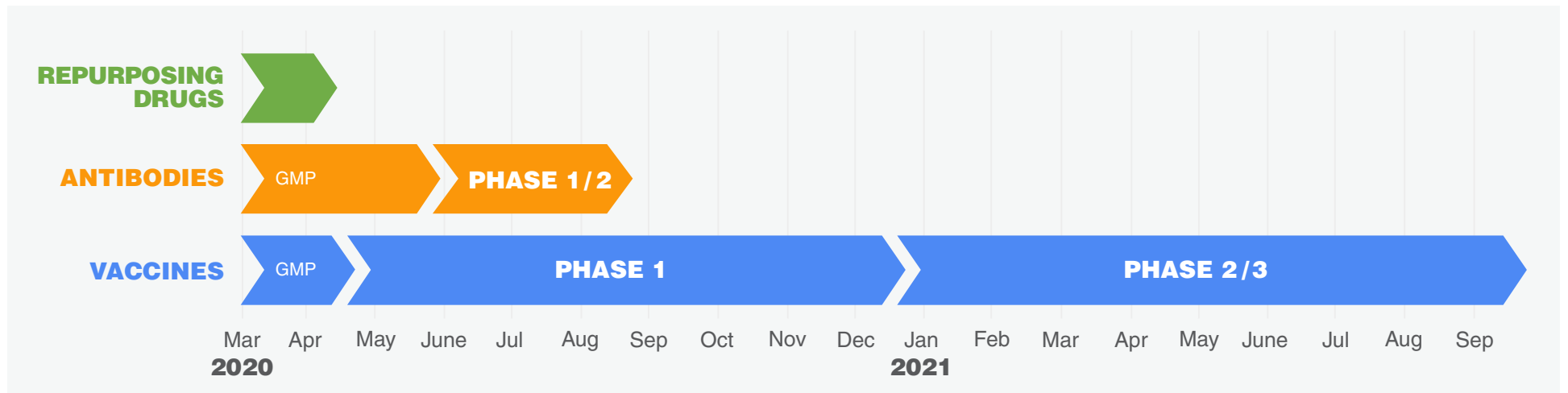


# COVID-19: PROJECTED TIMELINE FOR TREATMENT AND PREVENTION



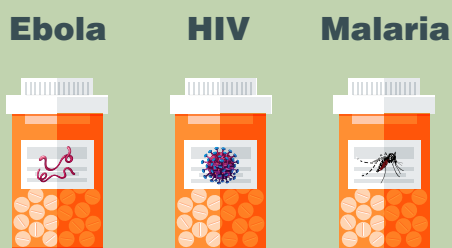
There are **66 programs** working on **3 different approaches**:



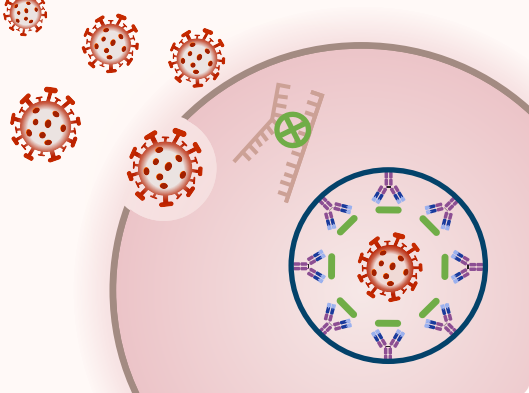
## REPURPOSED DRUGS

Existing first line of defense

Studying drugs that are already approved to treat other diseases to see if they are effective to treat COVID-19.



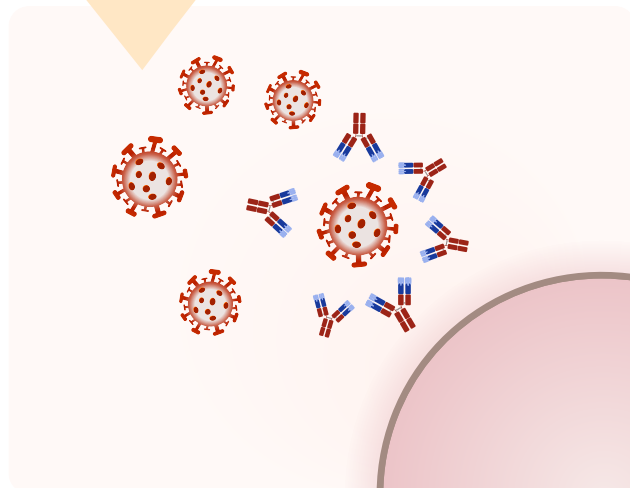
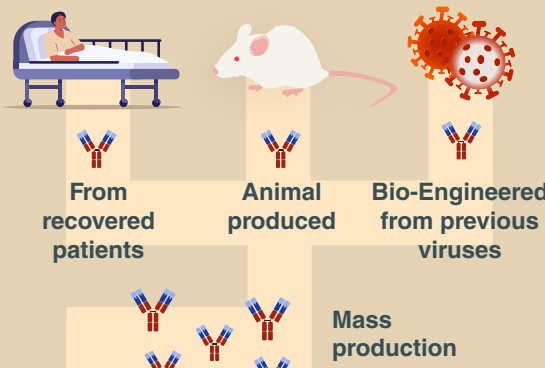
Stops Replication or Blocks Virus



## ANTIBODIES

Critical to treat this season's COVID-19

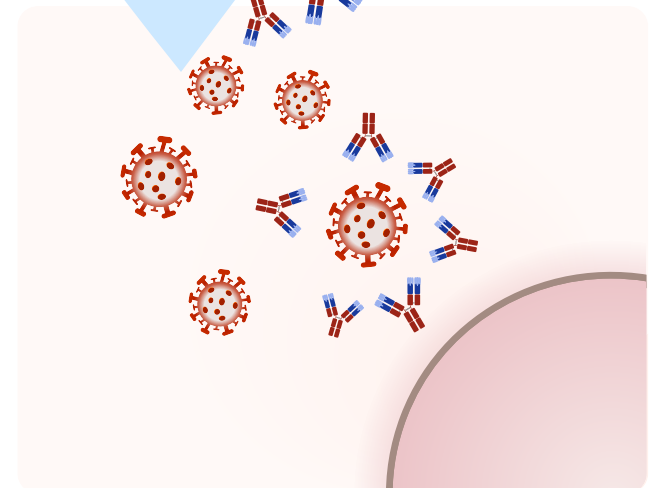
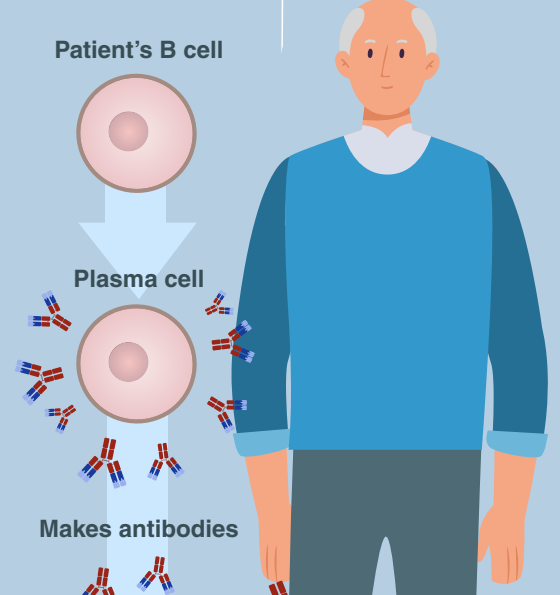
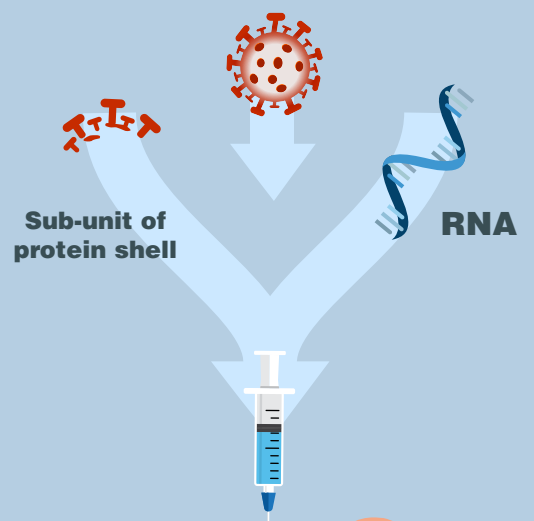
Y-shaped proteins that stick to the virus SARS-CoV-2. These can be manufactured through recombinant technology and injected into patients to prevent or reduce infection.



## VACCINES

Critical to treat a seasonal COVID-19

Vaccines mimic enough of the viral infection to trigger the body's immune response which makes antibodies against the virus.



Learn more at [www.synbiobeta.com/COVID19](http://www.synbiobeta.com/COVID19)



Created by: Karyn Riegel | Leaps By Bayer  
Jacob Glanville | Distributed Bio  
John Cumbers, Nikita Michelsen, Frank Tate | SynBioBeta  
Karl Handelsman | Codon Capital  
Graphic Design: Darius Farraye

"Compassionate use" allows experimental medicines to be used for seriously ill patients when no good treatment option is available. Such experimental medicines have shown they are effective in human trials, but are not yet FDA approved. Definitions: GMP = Good Manufacturing Practice, a US grade standard for drugs prior to testing. Phase 1: when a drug is testing on a small group of humans.

Phase 2: involves testing on a larger group of humans similar to the people who the vaccine is intended for. Phase 3: Approval trial.

Our data is sourced from the Milken Institute's COVID-19 Tracker: <https://milkeninstitute.org/covid-19-tracker>. Accurate as of March 24, 2020.